

MERRIC SEATING
 4750 Eain City Expressway - Bridgeton, Missouri 63044
 Phone: (314) 770-9944 / Fax: (314) 770-4440

This document, including all information contained herein, is the exclusive and confidential property of Merric, Inc. The document and information are not to be copied, reproduced, or delivered to others, in whole or in part, without the written consent of Merric, Inc. The document is to be returned promptly to Merric, Inc. after having served the purpose for which delivered.

PROJECT NO.	DATE	REVISED

MERRIC CATALOG NUMBER
P1821

PODIUM
 18" X 21"

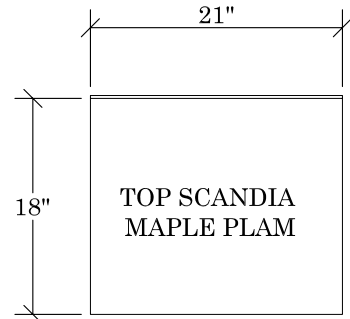
NOTE:
 PLYWOOD BASE WITH UNFINISHED TOE KICK

PODIUM
 P1821

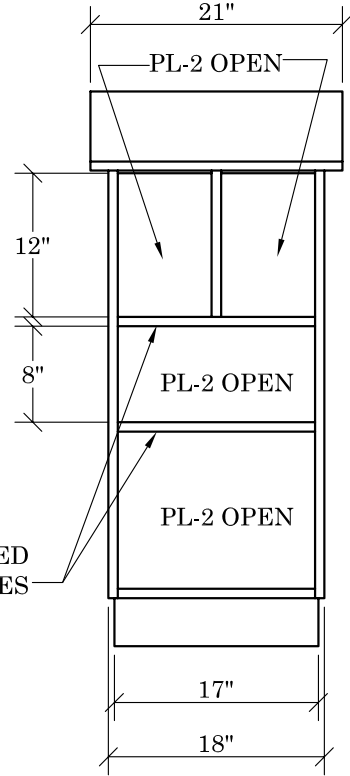
APPROVED BY:

NAME: _____

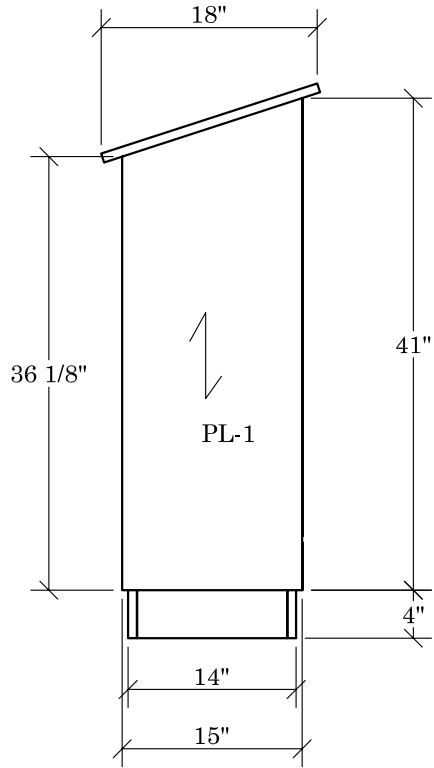
DATE: _____



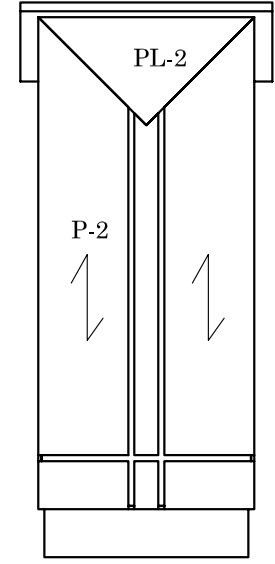
TOP VIEW



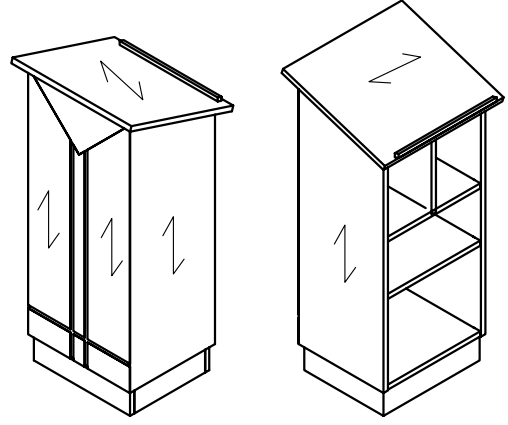
SERVER SIDE



END



CUSTOMER SIDE



FINISH SCHEDULE:

TOP: SCANDIA MAPLE PLAM
 PL-1: SCANDIA MAPLE MELAMINE
 PL-2: NAVY P-LAM
 P-2: FRENCH BLUE/SCANDIA MAPLE

HARDWARE SCHEDULE:

MERRIC SEATING
 4750 Eain City Expressway - Berigan, Missouri 63044
 Phone: (314) 770-9944 / Fax: (314) 770-4440

This document, including all information contained herein, is the exclusive and confidential property of Merric, Inc. The document and information are not to be copied, reproduced, or delivered to others, in whole or in part, without the express written consent of Merric, Inc. The document is to be returned promptly to Merric, Inc. after having served the purpose for which delivered.

PROJECT NO:	DATE:
REVISED BY:	REVISED DATE:
SCALE:	1 of 1

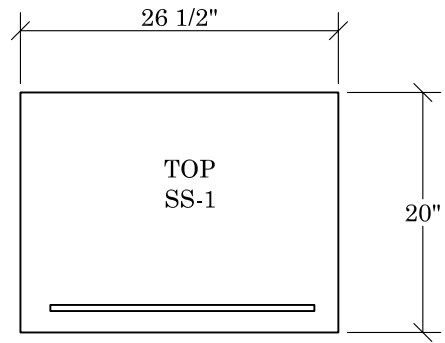
MERRIC CATALOG NUMBER
P2026

PODIUM
 20" x 26 1/2"

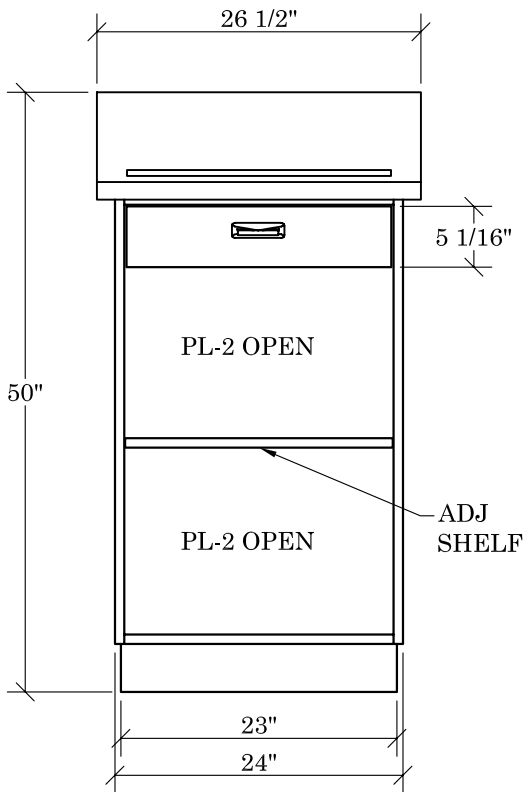
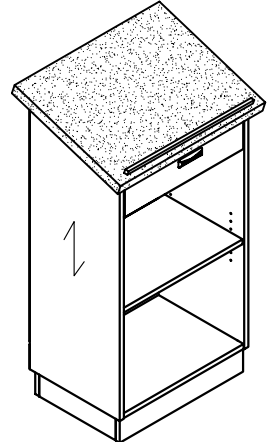
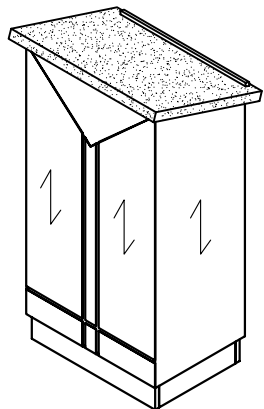
NOTE:
 PLYWOOD BASE WITH UNFINISHED TOE KICK

PODIUM
 P2026

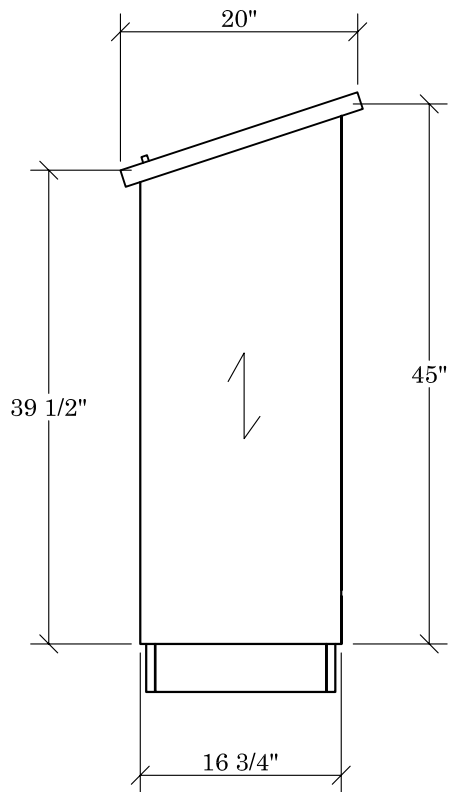
APPROVED BY:
 NAME: _____
 DATE: _____



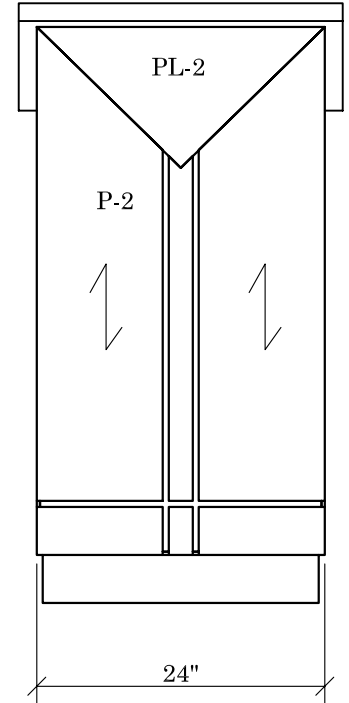
TOP VIEW



SERVER SIDE



END



CUSTOMER SIDE

FINISH SCHEDULE:
SS-1: SOLID SURFACE (CORIAN AZURE)
PL-1: SCANDIA MAPLE MELAMINE
PL-2: NAVY P-LAM
P-2: FRENCH BLUE/SCANDIA MAPLE
HARDWARE SCHEDULE:

PODIUM TOPPER

PT2021

APPROVED BY:

NAME:

DATE:

WOOD BASE WITH UNFINISHED TOE KICK

END

MERRIC
SEATING
4750 Earth City Expressway - Berigton, Missouri 63014
Phone: (314) 770-5944 / Fax: (314) 770-1440

This document, including all information contained herein, is the exclusive and confidential property of Merric, Inc. The document and information are not to be distributed, copied, or used by any other person, in whole or in part, without the expressed written permission of Merric, Inc. The document is to be returned promptly to Merric, Inc. after having served the purpose for which delivered.

F: / M - ENG/CAT/LOG

REVISION:

AF

ISSUE DATE:

NOV. 2018

PROJECT:

MERRIC

PROJECT NUMBER:
02-16-09

NOV. 2018

MERRIC

1 of 1